

Case Study – Horsforth School & Academy



Project Title	Horsforth – High Level Asbestos Removal Works
Location	Horsforth School - Leeds
Client	Coal Consultants
Client Representative	Coal Consultants Independent Analytical Support & Project Managers
Project Value	£31,500.00
Project Commencement	April 2013
Project Completion	April 2013
Project Description	Removal of high level Asbestos Insulation Board to various classrooms and corridors.
Challenges	Working to a tight programme, ensuring set up, removal works and clearance are all completed within the Easter half term prior to reoccupation. Programme delays would result in forced classroom closures and possible delay to reoccupation.

Project Inception

Winsulate were invited to tender by the educational establishment's nominated asbestos consultant (Coal Consultants) in their capacity as Project Manager for the asbestos works. The works were due to take place during the Easter half term and subsequently the working programme and the ability to meet the project timelines were critical to the success of the abatement works. Any delay in completion of the works would have a drastic impact on the school's ability to reopen with all areas requiring immediate reoccupation following the half term break.

With no approved asbestos removal contractor in place, the ultimate client chose to appoint an external asbestos consultancy to lead the project through to a success completion. Having worked successfully with Coal Consultants on numerous other occasions, Winsulate were invited to take part in the formal tender process.

Project Overview

The work involved the removal and safe disposal of asbestos insulation board at high level to various areas of the school premises, including classrooms, corridors and staff areas (approximately 200 m²). With a variety of access issues and with the added restrictions faced in quickly occupying areas followed by quick decants, the project was complex in approach, if not in scope.

Figure 1

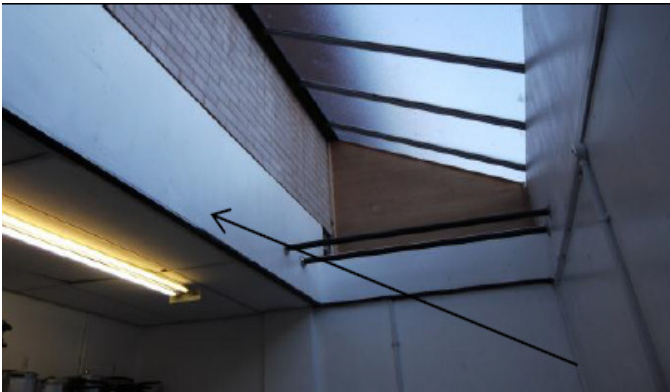


Project Approach

Following tender award, Winsulate were keen to meet with the clients consultant to establish handover dates of all areas and to understand exactly what environment we will be facing upon commencement, such as what obstructions were we likely to find to hinder free access etc.

Having the ability to establish the issues we were likely to be faced with, enabled us to ensure there were no unforeseen risk, issues or items that could possibly delay the programme.

Asbestos Insulation Board to be Removed (Fully Controlled Conditions)



Each item of asbestos insulation board was treated independently with an independent enclosure erected and removal works completed to each area under fully controlled conditions. By working in independent areas, we were able to manage a succinct removal programme with multiple areas running concurrently yet independently of each other.

Auditing and Control

1. Internal Audits Weekly
2. Weekly Progress Meetings on Site (Consultant)
3. Continual liaison with Site Supervisor
4. Frequent liaison with the client and consultants

Outcome

All asbestos removal works were completed within the exact timeframe communicated to the client at tender stage, with no programme delays or health and safety incidents. We remain on the clients select tender list and have returned to work with them at Horsforth School as the schools preferred contractor on an open book basis, reducing the clients tender expenditure.